

38 Caswell Bay Court, Caswell, Swansea, City & County Of Swansea, SA3 4RY

£399,999

A truly spectacular setting, with breathtaking views of the picturesque Caswell Bay and surrounding headland. This impeccably finished apartment is presented beautifully throughout and boasts a balcony with south-facing sea views and sufficient space for a table and chairs.

The tastefully presented and appointed accommodation comprises; communal hall, hall with a video security intercom system, lounge/kitchen, master bedroom with en-suite, bedroom two, and bathroom. Externally you have a sliding entrance gate with an adjacent push-button security video/intercom entry system, gives vehicular access to allocated and visitor parking. There are communal grounds that are laid mainly to lawn with a variety of shrubs and plants.

A stone's throw away from the beautiful Caswell Bay. The coastal path is only a short stroll away which leads you to the neighboring Langland Bay. The bustling village of Mumbles is also in close proximity. Viewing is highly recommended to fully appreciate both the finish of the apartment and also the spectacular sea views. NO CHAIN. EER-C69

Entrance

Entrance door with a touch button security intercom system. Internal door giving access to a landing area, which leads to the apartment.

Hallway

Entrance via a hardwood front door. A security video intercom system for the main gate and entrance hall door. Doors to bedrooms, bathroom & lounge/kitchen.

Bathroom 8'4" x 5'6" (2.551 x 1.691)



A beautifully appointed bathroom suite comprising; bathtub. Walk-in shower cubicle with oversized shower head above. Low-level w/c. Wash hand basin. Wall-mounted radiator. Tiled walls. Extractor fan. Underfloor heating.

Bathroom



Bedroom One 9'1" x 15'7" (2.775 x 4.772)



With a double glazed window to the rear. Sliding door to en-suite. Underfloor heating.

Bedroom One

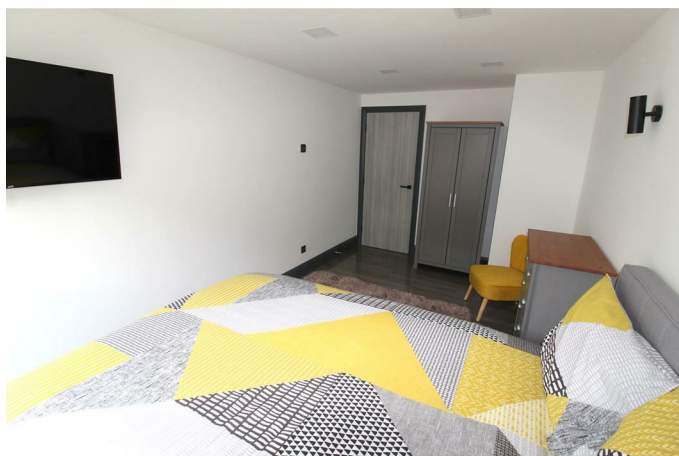


En-Suite 5'10" x 5'4" (1.790 x 1.650)



With a frosted double glazed window to the rear. A beautifully appointed suite comprising; bathtub. Low-level w/c. Wash hand basin. Wall-mounted radiator. Tiled floor. Tiled walls. Extractor fan. Underfloor heating.

Bedroom Two 8'7" x 15'7" (2.639 x 4.770)



With a double glazed window to the rear. Underfloor heating.

Bedroom Two



Open Plan Living Room



With a double glazed sliding door to the front balcony area boasting breathtaking views of the picturesque Caswell Bay. Underfloor heating.

Open Plan Living Room



Open Plan Living Room



Kitchen



With two double glazed windows to the rear. Well-appointed kitchen fitted with a range of base and wall units, running work surface incorporating a four ring induction hob with contemporary extractor hood over. Sink and drainer unit with mixer tap over. Integral washing machine. Integral fridge. Integral freezer. Integral microwave. Integral oven & grill.

Kitchen



Grounds



Externally you have a sliding entrance gate with an adjacent push-button security video/intercom entry system, gives vehicular access to allocated and visitor parking. There are communal grounds that are laid mainly to lawn with a variety of shrubs and plants.

Grounds



Balcony



View



View



View



Tenure

Leasehold.

Council Tax Band

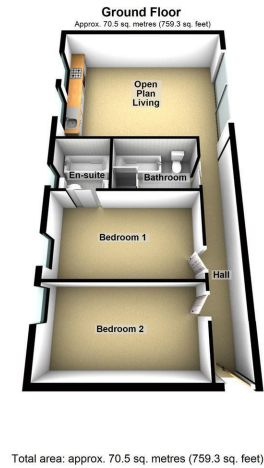
Council Tax

Band: F

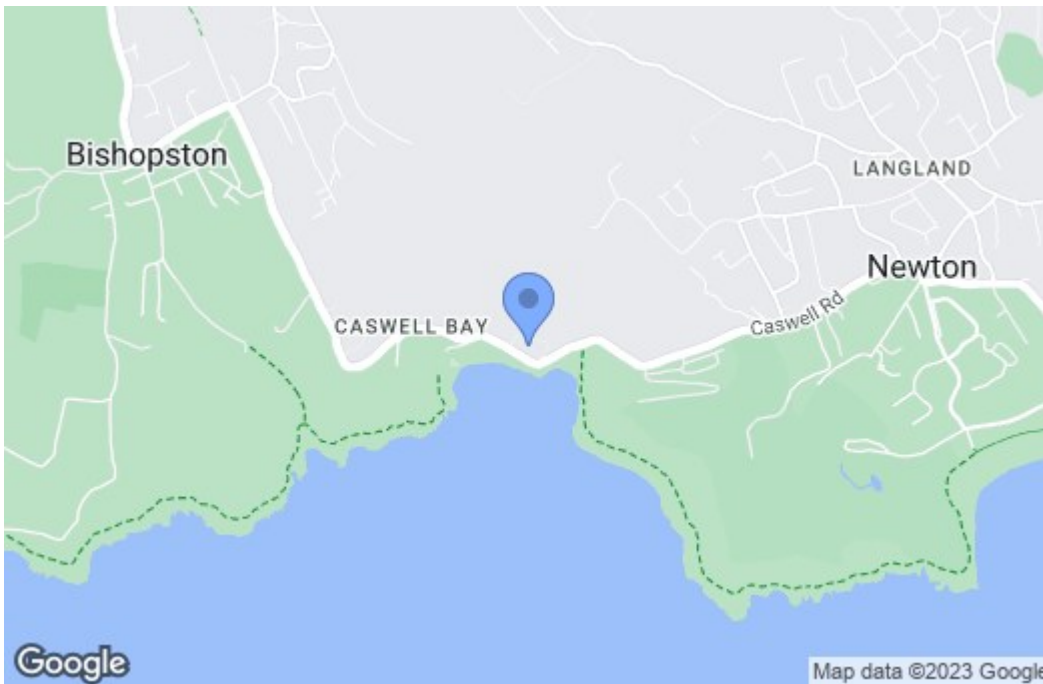
Annual Price:

£2,574.64 (min)

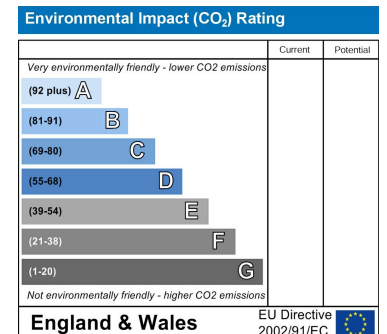
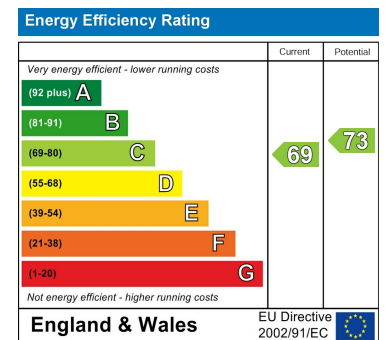
Floor Plan



Area Map



Energy Efficiency Graph



These particulars, whilst believed to be accurate are set out as a general outline only for guidance and do not constitute any part of an offer or contract. Intending purchasers should not rely on them as statements of representation of fact, but must satisfy themselves by inspection or otherwise as to their accuracy. No person in this firm's employment has the authority to make or give any representation or warranty in respect of the property.